

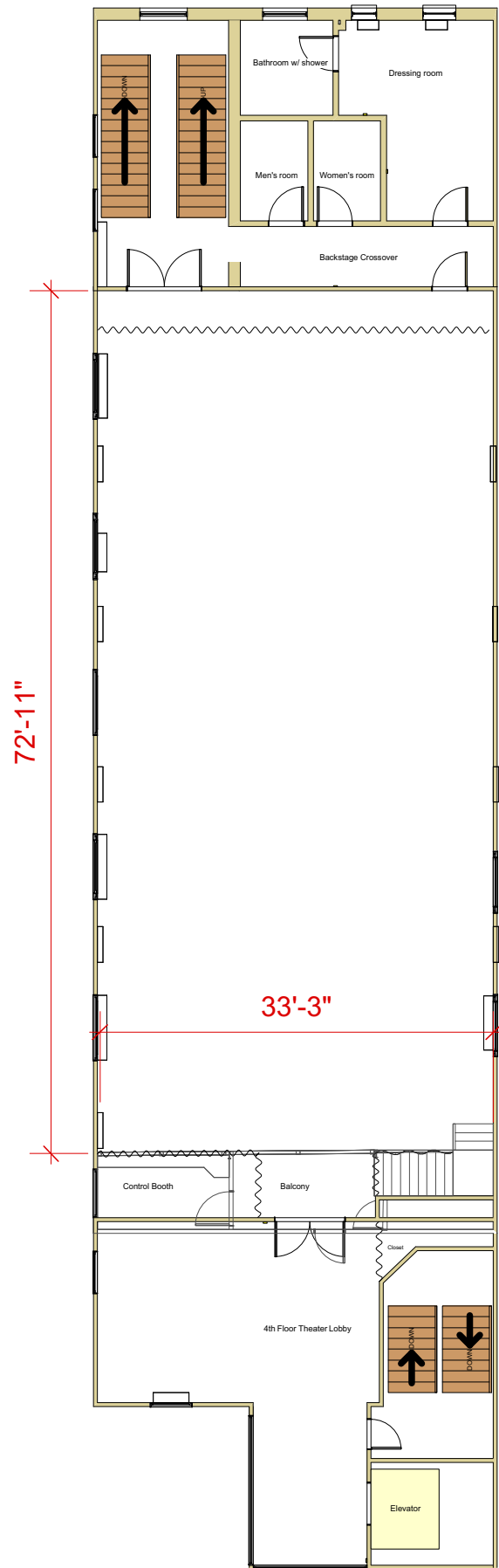
4th Floor Theater

Plan

Rep Seating for 96

Drawn by:
David Todaro

Revision date:
10/20/14



Sheet #
6
of 12

CHRIST CHURCH
neighborhoodhouse
20 N. American Street, Philadelphia, PA 19106 215.522.1055 www.christchurchphila.org

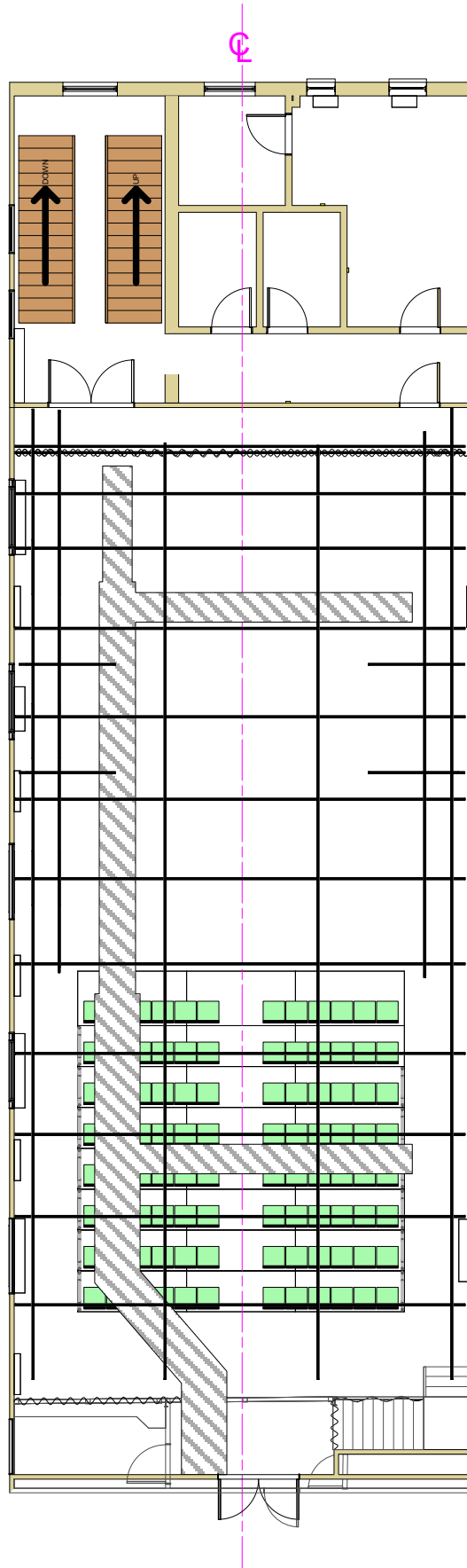
4th Floor Theater

Plan with Grid

Rep Seating for 96

Drawn by:
David Todaro

Revision date:
10/20/14



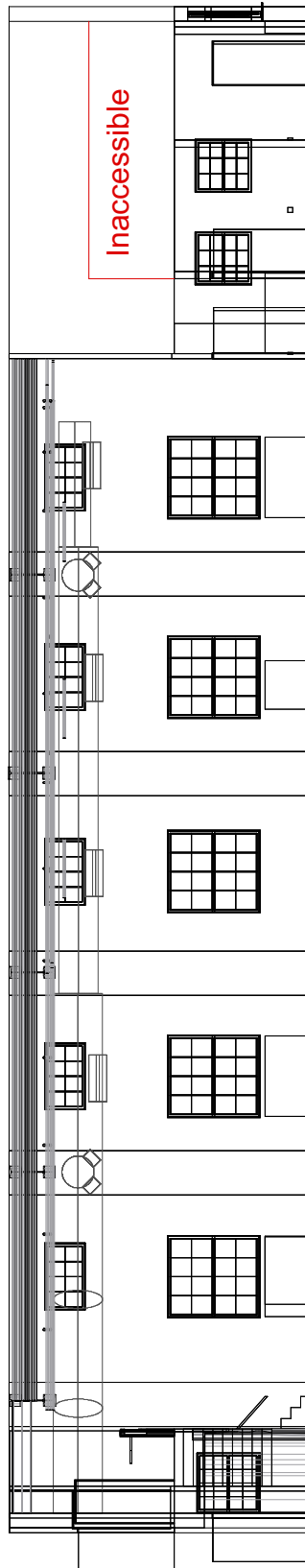
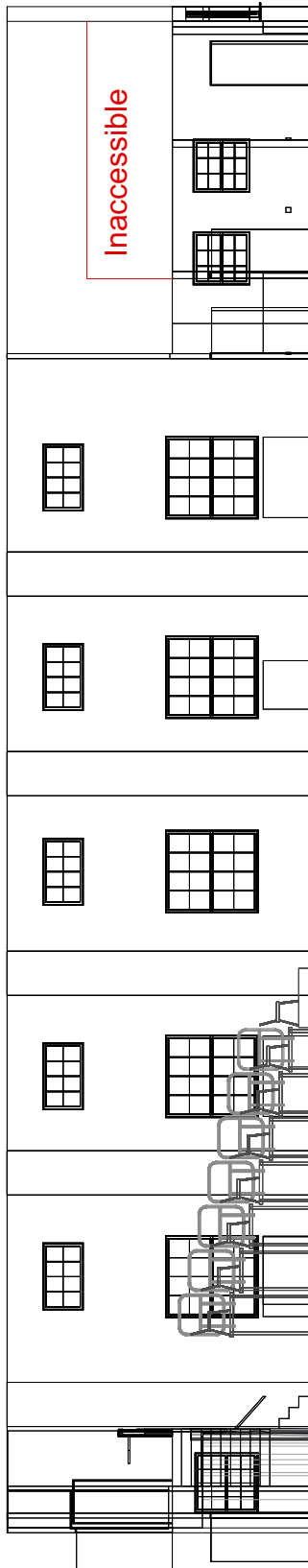
4th Floor Theater

Section

Rep Seating for 96

Drawn by:
David Todaro

Revision date:
10/20/14



Measurements from center
center of room:

Grid: 17' - 8 1/2"

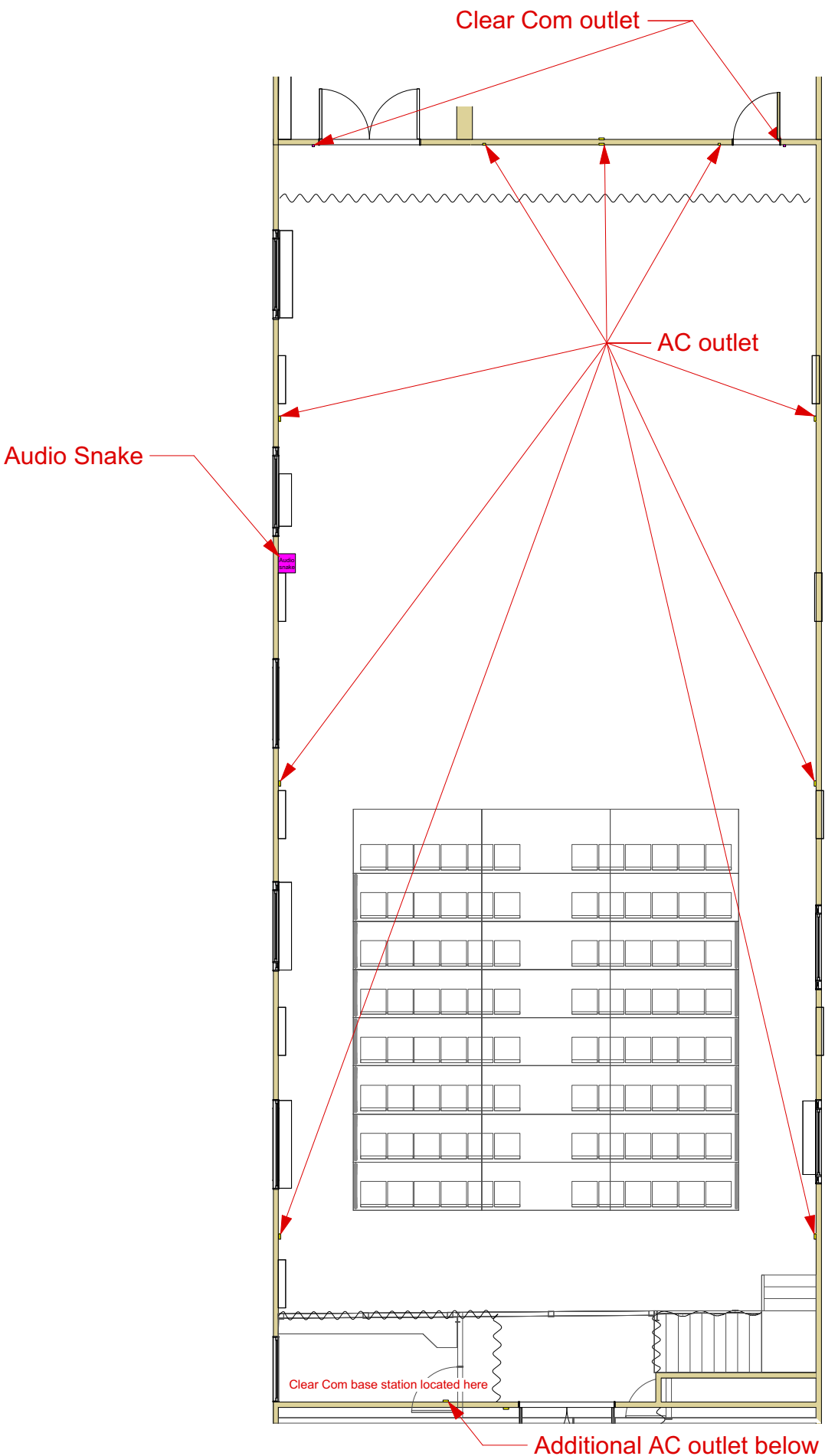
Junior Beams: 17' - 9 3/4"

Senior Beams: 18' - 7 1/4"

Ceiling: 20' - 5 1/2"

HVAC height at lowest:
14' - 1"

Note- Grid and ceiling
slopes slightly with highest
point at northwest corner
and lowest point at
southeast corner.



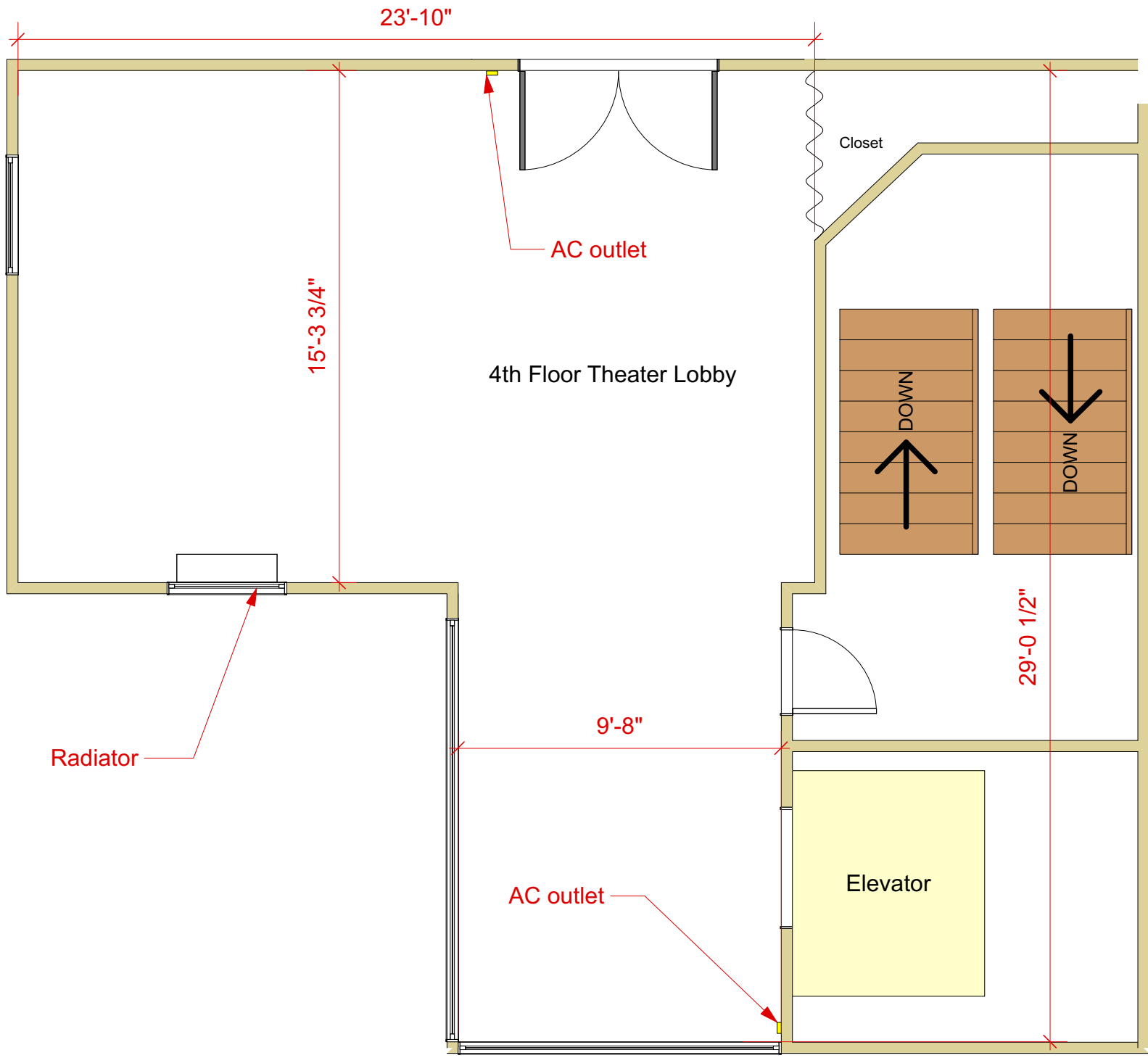
Additional AC outlet below booth

4th Floor Theater

Lobby detail

Drawn by:
David Todaro

Revision date:
10/20/14

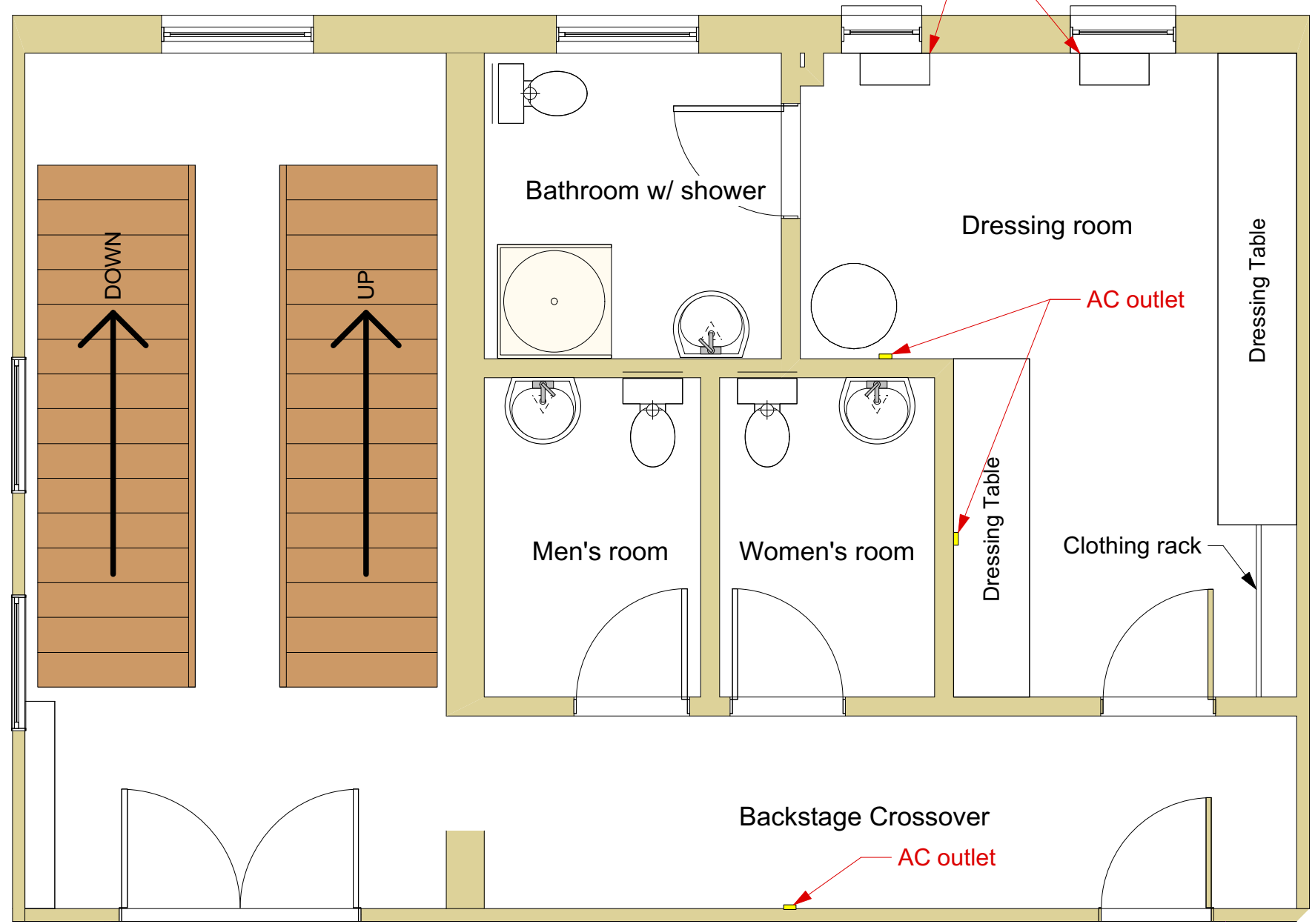


4th Floor Theater

Backstage Detail

Drawn by:
David Todaro

Revision date:
10/20/14



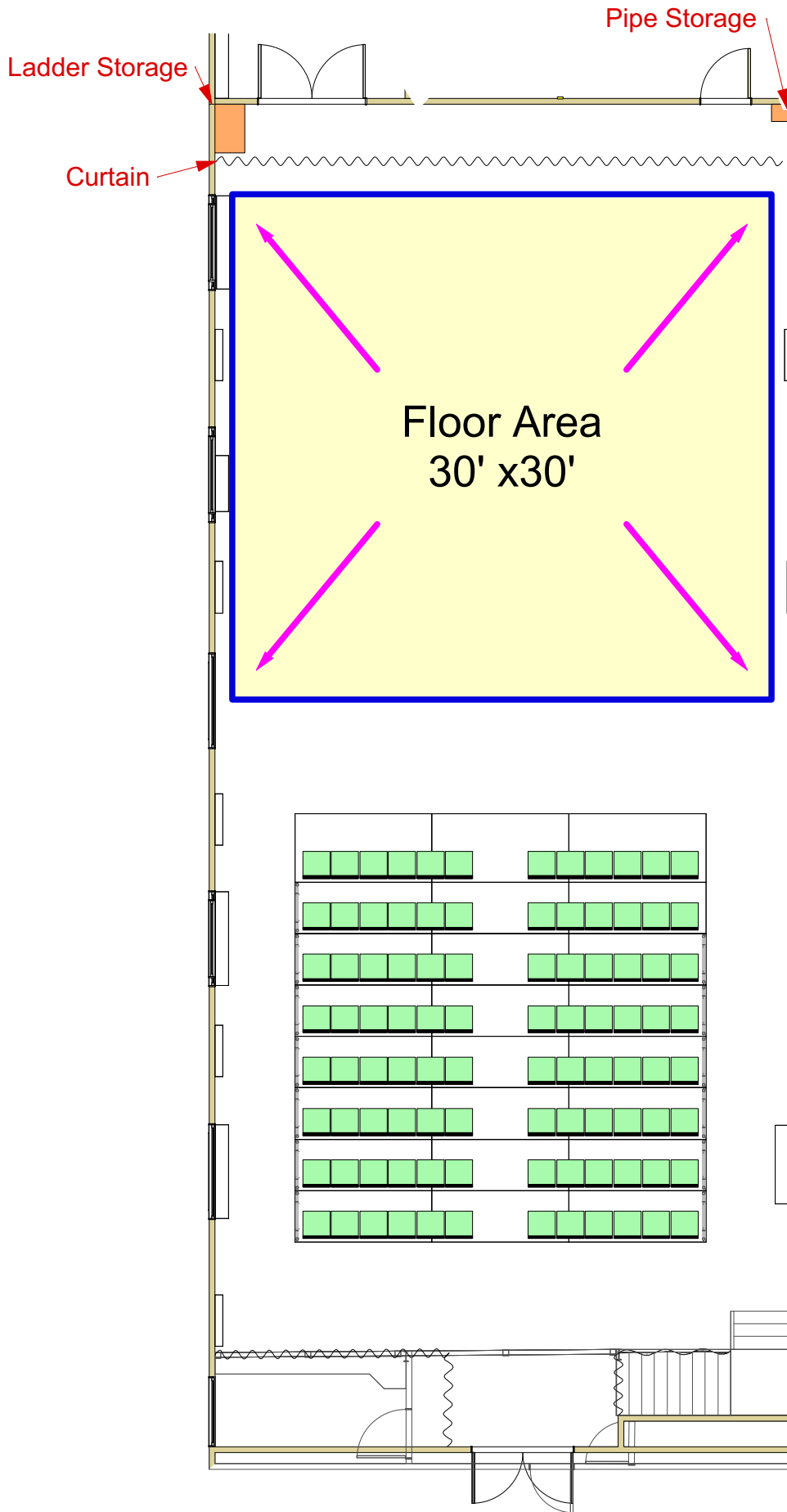
4th Floor Theater

Floor Area

Rep Seating for 96

Drawn by:
David Todaro

Revision date:
10/20/14



4th Floor Theater

Banquet Example

Drawn by:
David Todaro

Revision date:
10/20/14

