

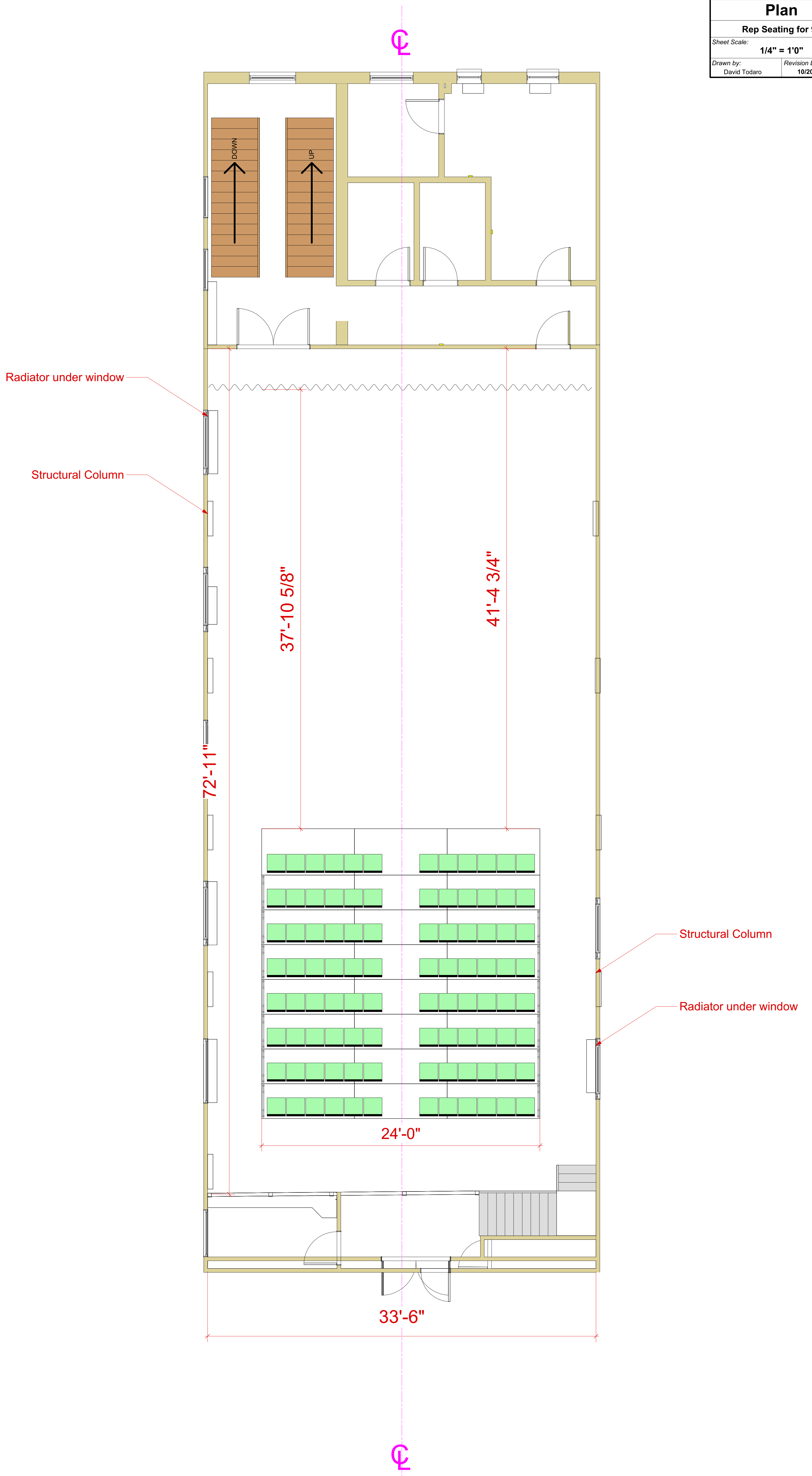
4th Floor Theater

Plan

Rep Seating for 96

Sheet Scale: 1/4" = 1'0"

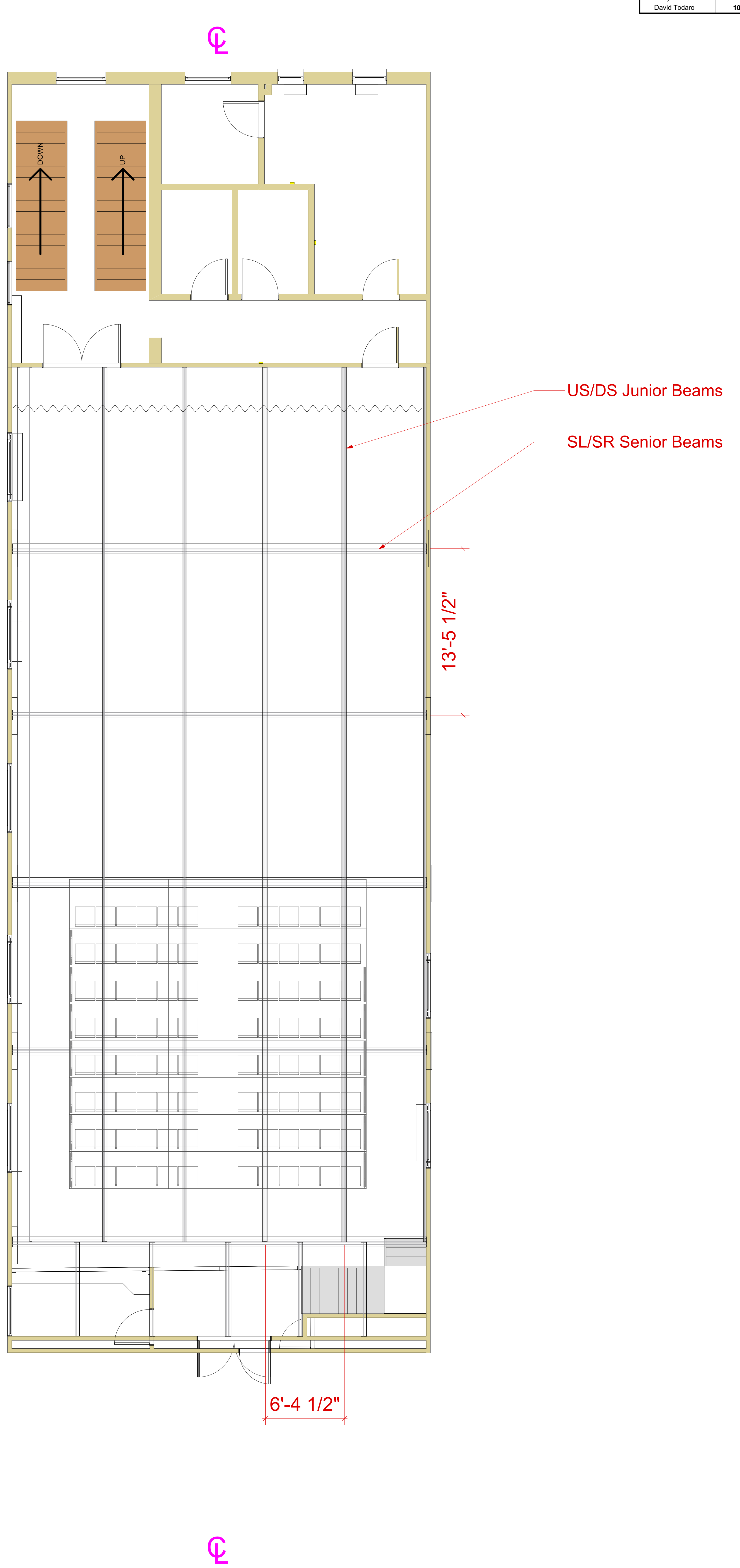
Drawn by: David Todaro
Revision Date: 10/20/14



4th Floor Theater
I-Beams

Sheet Scale: 1/4" = 1'0"

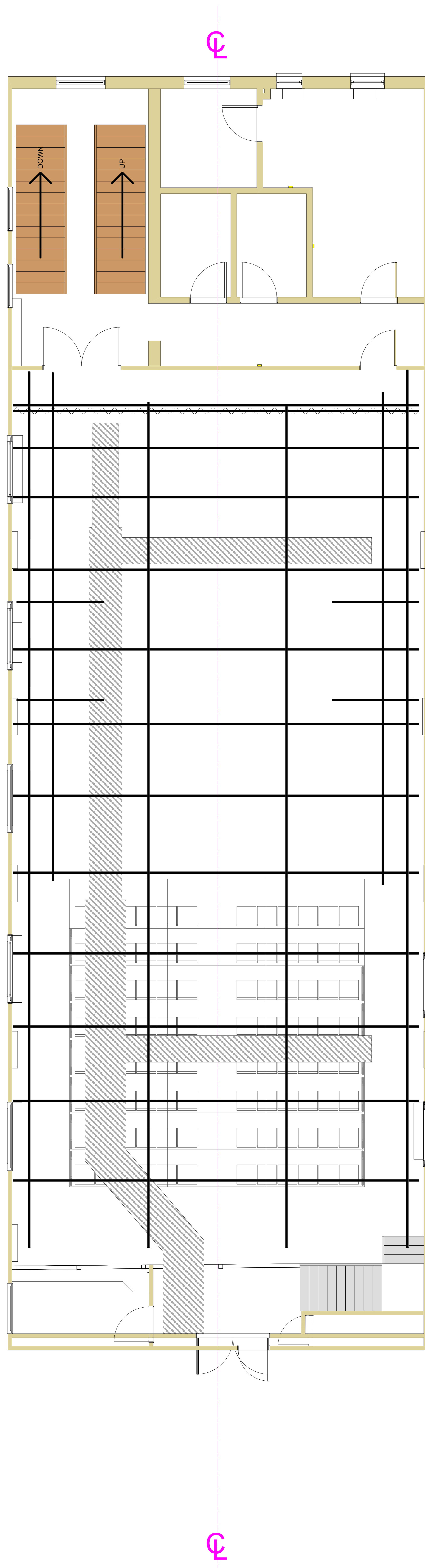
Drawn by: David Todaro
Revision Date: 10/20/14



4th Floor Theater
Grid w/ HVAC

Sheet Scale: **1/4" = 1'0"**

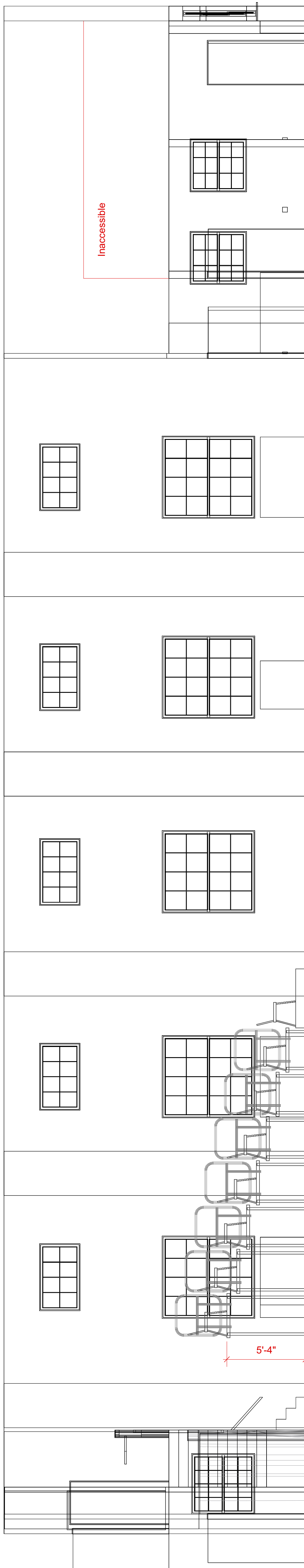
Drawn by: David Todaro
Revision Date: 10/20/14



4th Floor Theater
Section

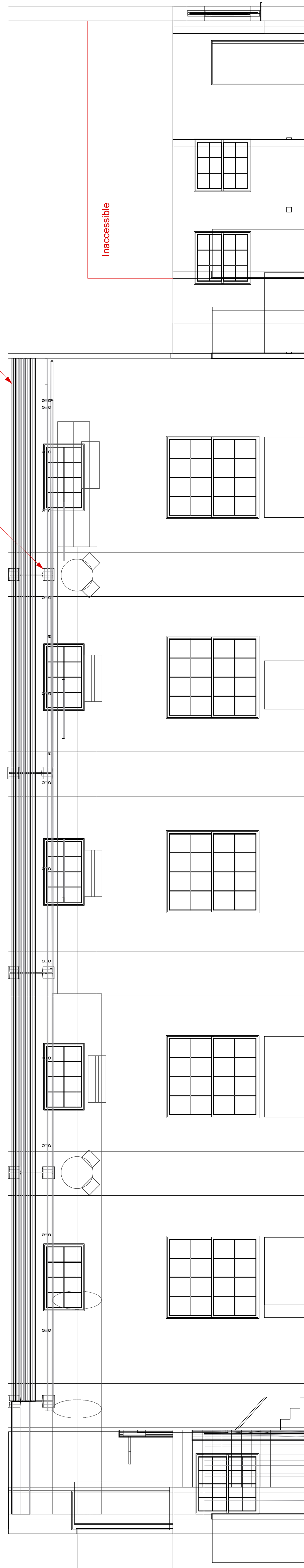
Sheet Scale: **1/4" = 1'0"**

Drawn by: David Todaro
Revision Date: 10/20/14



US/DS Junior Beams

SL/SR Senior Beams



Measurements from center center of room:

Grid: 17' - 8 1/2"

Junior Beams: 17' - 9 3/4"

Senior Beams: 18' - 7 1/4"

Ceiling: 20' - 5 1/2"

HVAC height at lowest: 14' - 1"

Note- Grid and ceiling slopes slightly with highest point at northwest corner and lowest point at southeast corner.